

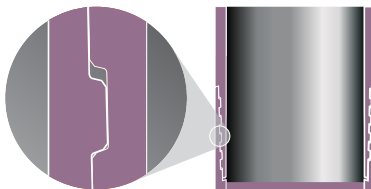
Drill Rod & Casing



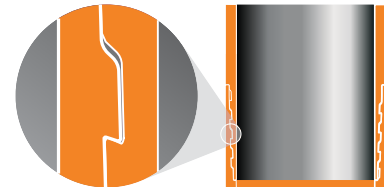
GEO DRILLING MACHINERY LTD. rods are produced using cold drawn steel tubes, grades of them is ASTM A510 4130 standart. Drill rods are 20 cm quench and temper heat treatment of box and pin ends for increased tensile and yield strength.

GEO DRILLING MACHINERY LTD. produce 4 types of thread profiled as WL-Q, WL-HD, WL-R and WL-X. For easily identification grooves are open on the pin end of drill rods according to profile types.

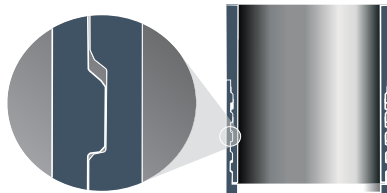
WL-Q THREAD PROFILE



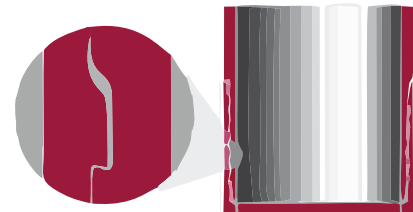
WL-R THREAD PROFILE



WL-HD THREAD PROFILE



WL-X THREAD PROFILE



Wireline Drill Rod Threads

Item No	Description	Outer Diameter	Inner Diameter	Weight	Depth	Yield Strength	Tensile Strength
G51587-Q	NWL-Q	69.90 mm	60.30 mm	7.8 kg/m	1500 m	650 MPa	790 MPa
G51587-HD	NWL-HD	69.90 mm	60.30 mm	7.8 kg/m	3000 m	650 MPa	790 MPa
G51587-R	NWL-R	69.90 mm	60.30 mm	7.8 kg/m	3000 m	650 MPa	790 MPa
G51587-X	NWL-X	69.90 mm	60.30 mm	7.8 kg/m	3350 m	650 Mpa	790 Mpa

Item No	Description	Outer Diameter	Inner Diameter	Weight	Depth	Yield Strength	Tensile Strength
G51593-Q	HWL-Q	88.90 mm	77.80 mm	11.4 kg/m	1500 m	650 MPa	790 MPa
G51593-HD	HWL-HD	88.90 mm	77.80 mm	11.4 kg/m	2500 m	650 MPa	790 MPa
G51593-R	HWL-R	88.90 mm	77.80 mm	11.4 kg/m	2500 m	650 MPa	790 MPa
G51593-X	HWL-X	88.90 mm	77.80 mm	11.4 kg/m	3050 m	650 Mpa	790 Mpa

Item No	Description	Outer Diameter	Inner Diameter	Weight	Depth	Yield Strength	Tensile Strength
G3541744-HD	PWL-HD	114.40 mm	101.40 mm	16.9 kg/m	1500 m	650 Mpa	790 Mpa

Casing Threads

Item No	Description	Outer Diameter	Inner Diameter	Weight	Thread Pitch	Pin Length	Content
G66544	NW	88.90 mm	76.20 mm	12.8 kg/m	10.2	62.7 mm	455.7 l/100m
G101337	HW	114.30 mm	101.60 mm	17.4 kg/m	10.2	44.4 mm	810.8 l/100m
G3543977	PW	139.70 mm	127.00 mm	21.4 kg/m	10.2	44.4 mm	1266.6 l/100m

Part No	Description	Part No	Description
N Size Rod		G51592-R	HWL-R Rod 1,50 m
G51586-Q	NWL-Q Rod 1,50 m	G51593-R	HWL-R Rod 3,00 m
G51587-Q	NWL-Q Rod 3,00 m	G51592-RT	HWL-RT Rod 1,50 m, Heat Treated
G51586-QT	NWL-QT Rod 1,50 m, Heat Treated	G51593-RT	HWL-RT Rod 3,00 m, Heat Treated
G51587-QT	NWL-QT Rod 3,00 m, Heat Treated	G51592-X	HWL-X Rod 1,50 m
G51586-HD	NWL-HD Rod 1,50 m	G51593-X	HWL-X Rod 3,00 m
G51587-HD	NWL-HD Rod 3,00 m	G51592-XT	HWL-XT Rod 1,50 m, Heat Treated
G51586-HDT	NWL-HDT Rod 1,50 m, Heat Treated	G51593-XT	HWL-XT Rod 3,00 m, Heat Treated
G51587-HDT	NWL-HDT Rod 3,00 m, Heat Treated	H Size Casing	
G51586-R	NWL-R Rod 1,50 m	G101336	HW Casing 1,50 m
G51587-R	NWL-R Rod 3,00 m	G101337	HW Casing 3,00 m
G51586-RT	NWL-RT Rod 1,50 m, Heat Treated	G101336-PWL	HW Casing (PWL Rod) 1,50 m
G51587-RT	NWL-RT Rod 3,00 m, Heat Treated	G101337-PWL	HW Casing (PWL Rod) 3,00 m
G51586-X	NWL-X Rod 1,50 m	P Size Rod	
G51587-X	NWL-X Rod 3,00 m	G3541743-HD	PWL-HD Rod 1,50 m
G51586-XT	NWL-XT Rod 1,50 m, Heat Treated	G3541744 -HD	PWL-HD Rod 3,00 m
G51587-XT	NWL-XT Rod 3,00 m, Heat Treated	G3541743-HDT	PWL-HDT Rod 1,50 m, Heat Treated
N Size Casing		G3541744-HDT	PWL-HDT Rod 3,00 m, Heat Treated
G66543	NW Casing, 1,50 m	P Size Casing	
G66544	NW Casing, 3,00 m	G3543976	PW Casing 1,50 m
G66543-HWL	NW Casing (HWL Rod) 1,50 m	G3543977	PW Casing 3,00 m
G66544-HWL	NW Casing (HWL Rod), 3,00 m	G3543976-HD	PHD Casing 1,50 m
G66543-HND	NW Casing (HND Rod) 1,50 m	G3543977-HD	PHD Casing 3,00 m
G66544-HND	NW Casing (HND Rod), 3,00 m	G3543978	SW Casing 1,50 m
H Size Rod		G3543979	SW Casing 3,00 m
G51592-Q	HWL-Q Rod 1,50 m	G3543978-HD	SHD Casing 1,50 m
G51593-Q	HWL-Q Rod 3,00 m	G3543979-HD	SHD Casing 3,00 m
G51592-QT	HWL-QT Rod 1,50 m, Heat Treated		
G51593-QT	HWL-QT Rod 3,00 m, Heat Treated		
G51592-HD	HWL-HD Rod 1,50 m		
G51593-HD	HWL-HD Rod 3,00 m		
G51592-HDT	HWL-HDT Rod 1,50 m, Heat Treated		
G51593-HDT	HWL-HDT Rod 3,00 m, Heat Treated		



A series of horizontal dotted lines for writing notes.