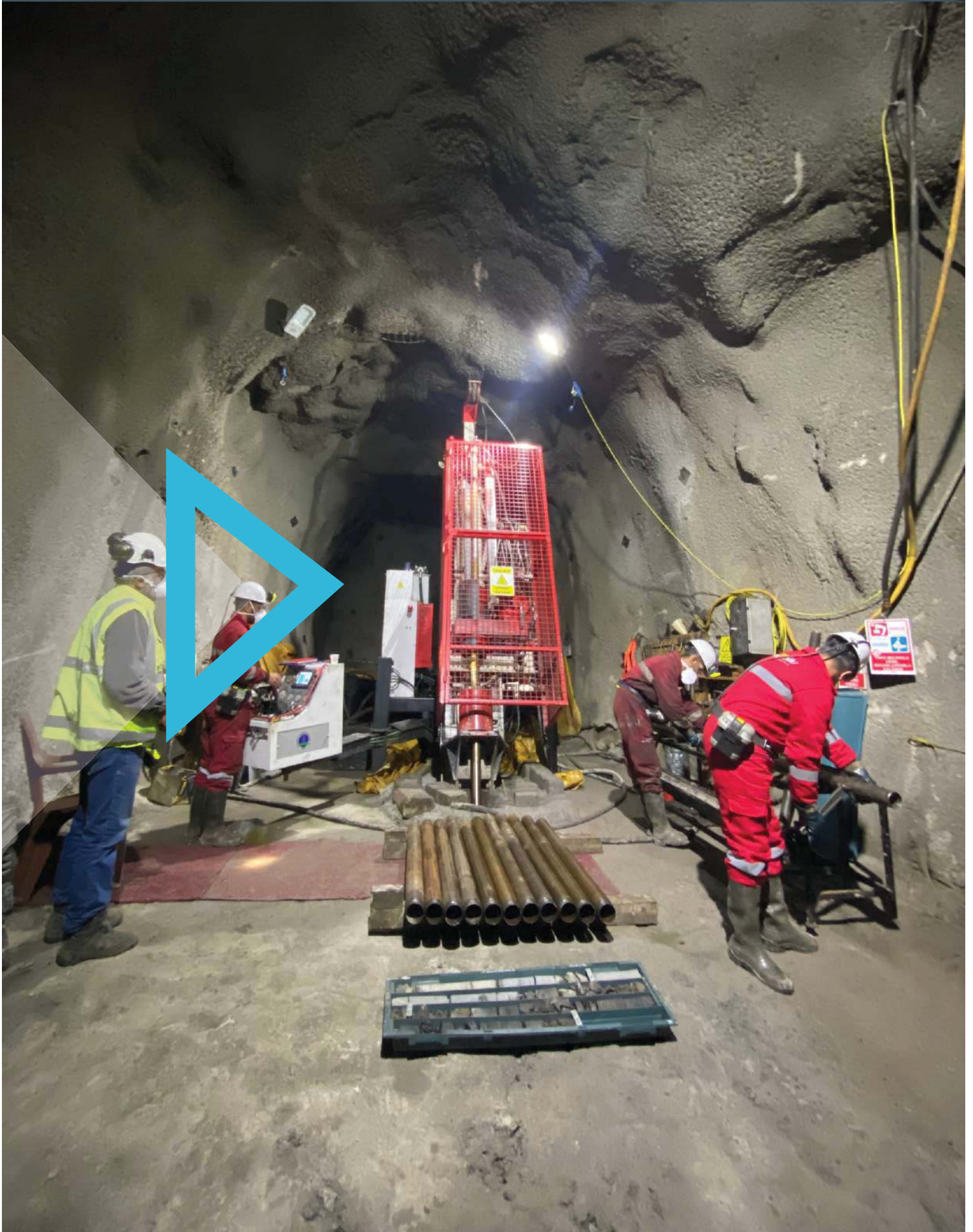


GEO 900 - E Drill Rig





Depth Capacities (Vertical Borehole)		
	Dry Hole (m)*	Wet Hole (m)*
PWL	1.000	1.100
HWL	1.500	1.650
NWL	2.200	2.400
BWL	3.000	3.300

(*) Depth capacity is given according to drill rig feed cylinder pull capacity. Depth capacity might be increased while using the rods which have light weight V-wall or different thread design. Depth based on vertical hole.

Power Unit (107 cc)	
Power	110 kW (148 HP) (@1500 RPM)
Engine Type	Electric Engine

EMTAS, Siemens or ABB electric engines are using our production.

Rotation Lubrication Unit	
Hydraulically driven cooled oil circulation, with 25 micron suction filter.	

Chuck Assembly	
Type	7 jaws - Hydraulic open, spring closed
Max. Inside Diameter	120 mm (P wireline size)
Holding Capacity	19.000 kg

Hydraulic System (@1.450 RPM)		
	Max. Flow Rate	Max. Pressure
Primary Pump	140 L/min	300 Bar
(Main hoist, Wireline hoist, Rotation, Fast feed pull/push cylinder and Crawler tracks)		
Secondary Pump	62 L/min	220 Bar

Hydraulic Oil Cooling	
Hydraulic and rotation unit box oil are cooling by air.	

Mast & Feed System	
Drilling Angle	Vertical to horizontal
Sliding Distance	1,00 m (According to mast axis)
Feed Travel	1,80 m
Telescopic Mast	1,50 m (Open and close by hydraulic feed cylinder)
Feed Speeds	Fast and slow with variable controls
Maximum Pull	16.000 kg
Maximum Push	12.750 kg

Standard 1,5 m pull, angle hole, telescopic mast for ease of set up, ST 52-3 steel profile.

Rod Holder	
There is a rod holder on top of the rotation unit. The rod holder keeps the rod steady, allowing it to be opened using a hydraulic chuck. By moving up and down with a spring system, the rod holder prevents damage to the threads of the rods. The rod holder prevents friction of the rod during advancement by moving forward and backward. P, H and N wireline jaws are using.	



Main Line Hoist		
Capacity	9.000 kg (Single line)	
Cable Size	16 m x 16 mm rope	
Line Speed	Bare Drum 35 m/min	
Hydraulic driven planetary hoist.		
Wireline Hoist		
Hydraulically driven with integral counter balance valves.		
Capacity	1.500 m x 4,6 mm rope	
	Line Pull (kg)	Line Speed (m/min)
Bare Drum	1.870	138
Full Drum	545	474
Rod Clamp		
Hydraulically powered N, H, P and S wireline rod jaw sizes.		
Capacity	20.000 kg	
Water Pump		
Hydraulically driven 835 water/mud pump.		
Max. Flow Rate	35 gpm @ 800 psi	
Drill Base Support		
Supports	4 Hydraulic leveling jacks.	
Travel Length	500 mm	
Crawler Mounted		
Max. Velocity	4,2 km/h	
Max. Slope	30 Degree	
Lighting System		
There are 4 LED lighting lamp on the mast.		
Mast Ladder		
3 parts of ladder.		

Weight	
Crawler Mounted Weight	10.000 kg
Hydraulic Hose & Connections	
Parker connection and hydraulic hoses German brand or Cast connection and hydraulic hoses Italian brand.	
Control Panel	
Emergency stop, Drill head rotation pressure, Feed monometer, Hold back monometer, Main hoist monometer, First pump monometer, Secondary pump monometer, Drill head rotation lubrication monometer.	
Engine pressure, Engine temperature, Engine RPM, Engine working hour, Engine trouble information, Drill head lubrication trouble information, Rotation RPM meter.	
Warranty	
1 year against faulty workmanship individual manufactures warranty on all components as per our terms and condition of sale.	
<p><i>These technical specifications are based on theoretical engineering calculations. Actual capacity will depend on specific drilling conditions and materials. Geo Sondaj Makine İmalat Ltd. reserves the right to change or make modifications to designs and specifications without prior notice or obligation.</i></p>	

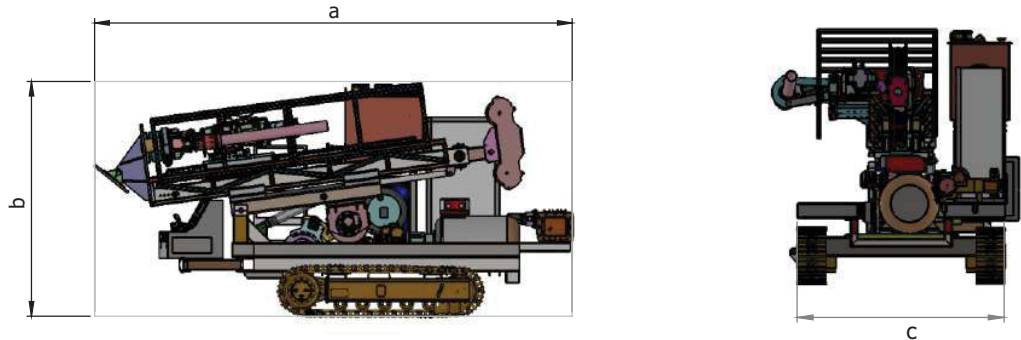


Options

Rod spinner, Rod holder, Rod loader, Swiveling control panel, Remote control panel, Mast ladder, Enclose operator cabin, Engine service information connection, Warning horn to alert drill crew, Fire suppression unit, Water flow meter, Hydraulic oil reservoir fill pump, Wireline hoist self levelling system

Dimensions

a : 5.400 mm
b : 2.665 mm
c : 2.150 mm



All weights and dimensions are approximations and are subject to change.

CE certificated.